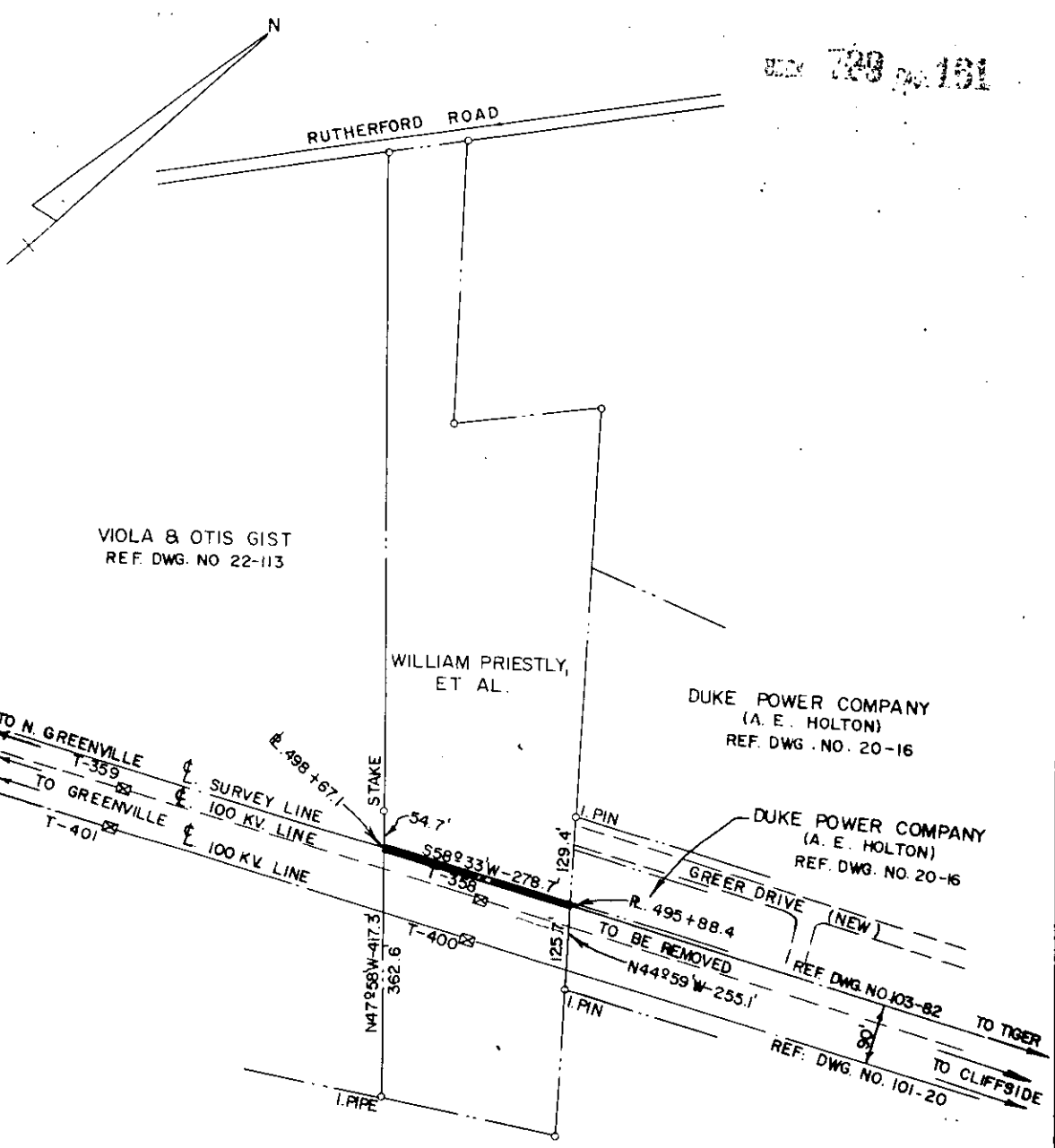


JULY 1963 pg. 151



For Right-of-way to this Plat, see Page 158 in this Book.

Recorded August 2nd., 1963 at 10:19 A. M. # 3722.

DUKE POWER COMPANY  
 TIGER - NORTH GREENVILLE  
 TRANSMISSION LINE  
 CROSSING PROPERTY OF  
 WILLIAM PRIESTLY, ET AL.  
 CHICK SPRINGS TOWNSHIP  
 GREENVILLE COUNTY, S. C.

SCALE: 1" = 200'  
 BOOK NO. 627  
 APRIL 25, 1963  
 FILE NO. 22-112